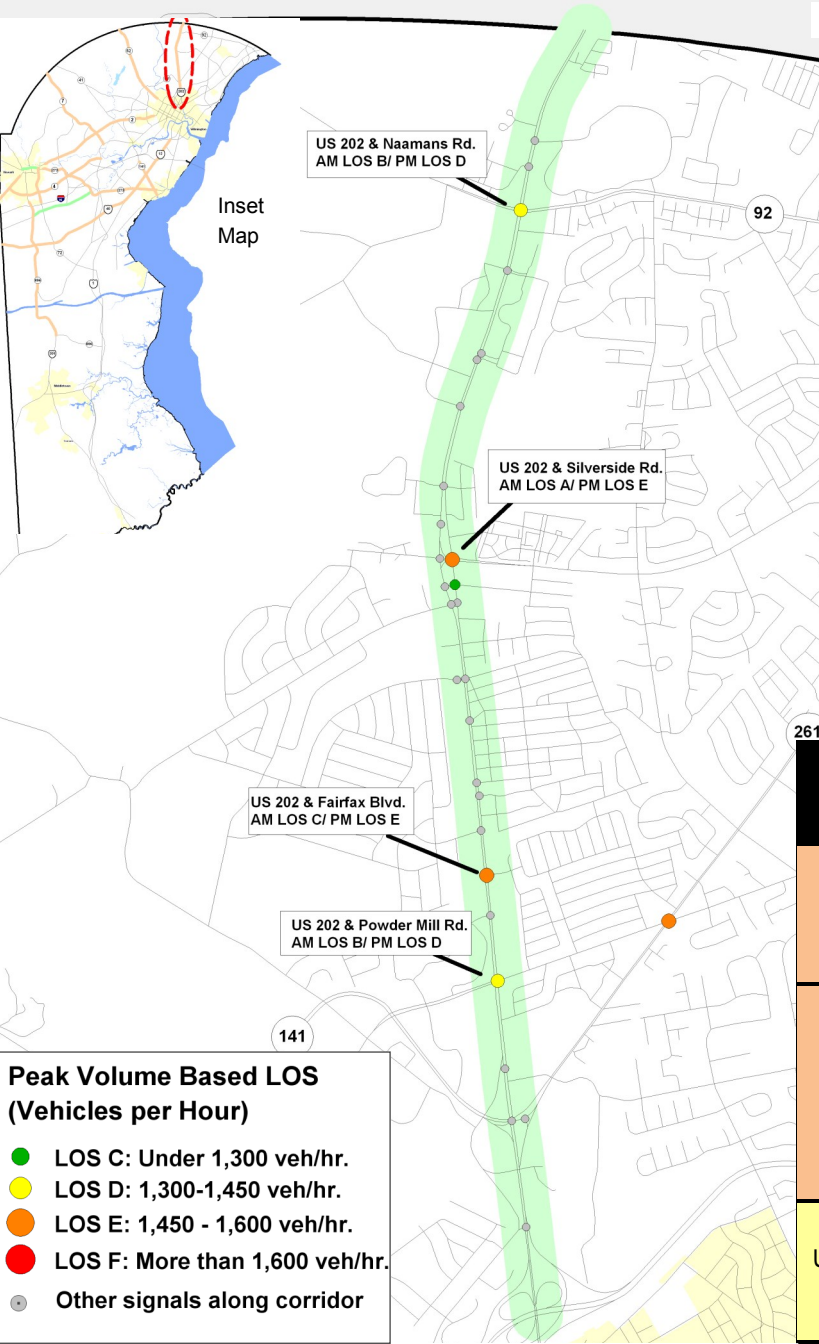


Corridor 2: US 202



Progress in Traffic Responsive Signalization (TRS) Implementation	
Implementation	Progress
Timing Improvements Implemented	Timing improvements implemented; corridor still being monitored.
Traffic Monitoring Equipment Installed	Partially completed; will be completed after construction.
Signals Brought Online w ith TMC	✓
Signal Softw are Upgrades	✓
Converted to Traffic Responsive System (TRS)	-

Mean Travel Times	
North Bound	
AM:	10.1 min
PM:	12.5 min
South Bound	
AM:	10.1 min
PM:	11.5 min

Capital Projects Along Corridor	
INTERSECTION	STATUS
US 202 & Fairfax Blvd.	No planned/programmed improvements.
US 202 & Silverside Rd.	No planned/programmed improvements.
US 202 & Powder Mill/Murphy Rd.	No planned/programmed improvements.
US 202 & SR 92 Naamans Rd.	No planned/programmed improvements.

INTERSECTION	EXISTING VOLUME LOS		DEMAND OVERAGE		IMPROVED VOLUME LOS		OPTIONS	COMMENTS
	AM	PM	AM	PM	AM	PM		
US 202 & Silverside Rd.			-	166	A*	C	1. Provide a 4th NB through lane on US 202.	Note: Pave and Rehab Project (Fall 2013) may yield minor improvement.
US 202 & Fairfax Blvd.			-	255	C*	C	1. Provide a 4th NB through lane on US 202.	- This option assumes retaining split phasing on side streets. - Note: Pave and Rehab Project (Fall 2013) may yield minor improvement. - Note: Astra Zeneca Downsizing/ Redevelopment will affect volumes.
US 202 & Powder Mill/Murphy Rd.			-	144	B*	C	1. Provide a 4th NB through lane on US 202.	- Note: Astra Zeneca Downsizing/ Redevelopment will affect volumes.